

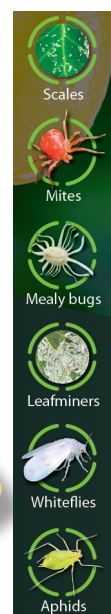


Amgrow Citrus & Fruit Spray



Amgrow Citrus & Fruit Spray Insecticide controls various scales, mites, mealy bugs, leafminers, whiteflies and aphids in the home garden.

ACTIVE CONSTITUENTS: 19.46 g/L PARAFFIN OIL.



Amgrow Citrus & Fruit Spray Insecticide controls various scales, mites, mealy bugs, leafminers, whiteflies and aphids.

HOW TO PREPARE: SHAKE WELL BEFORE USE.

Keep the spray agitated (i.e. shake at regular intervals). Thoroughly wet the leaves until runoff.

SITUATION	PESTS	HOW TO APPLY
Citrus	Citrus Leafminer	Spray every 5 to 14 days as required during flush growth periods. (Spraying is more likely to be required in Summer and Autumn). Start spraying when flushes are about 4cm long. Ensure that all immature leaves are thoroughly wetted on both sides. Do not spray more than 8 times per season.
	Red Scale	Apply in December and/or February – March
	White Wax Scale, Pink Wax Scale	Apply December/early January
	Black Scale	Apply mid December/early January. Repeat in February.
	Soft Brown Scale	Apply January/April. Use higher rate (TAS & WA) when infestation is severe.
Grapes	Grapevine Scale	May be controlled by spraying the dormant vines in winter, preferably after pruning.
Roses, Indoor and Outdoor Ornamentals	Scale, Aphid, Whitefly (NOT QLD), Mealy bugs	Apply as required.
Stone Fruit (e.g. Peaches, Plums, Apricots) and Pome Fruit (e.g. Apples, Pears)	San Jose Scale, Oyster Shell Scale, Spider Mites	Apply during dormant period up to green tip (Pome fruit) or bud swell (Stone fruit).

Amgrow Australia Pty Ltd
A.B.N 22 069 900 456
PO Box 6390 Silverwater NSW 1811

FREE CALL 1800 AMGROW or visit www.amgrow.com.au

