

READ SAFETY DIRECTIONS



Patrol[®]



ANT, SPIDER & COCKROACH KILLER

Ready to Use

ACTIVE CONSTITUENT: 3 g/L PERMETHRIN 25:75

Household Surface Spray

For the Control for up to 3 months of Ants, Spiders, Cockroaches, Fleas, Silverfish, Clothes Moths and Carpet Beetles Indoors and Outside.

CONTENTS 4 Litres



a 4/106 grose street, parramatta nsw 2150
p 02 9630 1733 f 02 9630 1930
e info@dbgraphics.com.au
w www.dbgraphics.com.au

Name: Amgrow Envirogreen Patrol Ant, Spider & Cockroach RTU - 4L - FRONT

DBG Job No: 54681

Item Code: N/A

Date: 25/01/11

Proof No.: 1

Dimensions: 155 x 135mm

Colours: ■ Cyan ■ Magenta ■ Yellow ■ Black

PLEASE EXAMINE THIS PROOF CAREFULLY

Whilst all care and attention is taken when preparing your design, it is requested you check all details carefully. It is the responsibility of the client to ensure that all details shown are correct and ready for production. The client is responsible for any errors in the design, which are not corrected by the client, before the design is completed. This is a proof, the colours and screen densities used in the proofing process provide a representation only, the final colour(s) may vary from this proof.



Ready to Use

HOW TO USE:
SHAKE WELL BEFORE USE

Spray only to surfaces and until they are evenly moist.

PESTS	SITUATION	HOW TO APPLY
Ants, spiders, cockroaches	Indoors Outdoors	Spray into cracks and crevices, cupboards and under and around sinks, stoves, refrigerators and other fittings. Around both sides of entrance and windows should be treated.
Carpet beetles, fleas	Indoors	Spray skirting boards, carpets, under furniture and around entrances.
Silverfish, clothes moths		Spray all surfaces inside wardrobes and cupboards. Avoid spraying directly on clothing.

NOT TO BE USED FOR ANY PURPOSE, OR IN ANY MANNER, CONTRARY TO THIS LABEL UNLESS AUTHORISED.

CAUTION: Harmful to fish. Remove or cover fish tanks before spraying. DO NOT allow chemical containers or spray to get into drains, sewers, ponds or streams. DO NOT spray directly on humans, pets, exposed food, food preparation areas or food utensils. DO NOT spray into air.

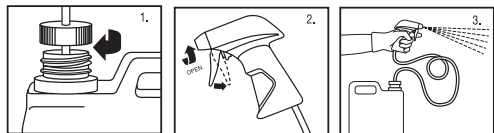
STORAGE AND DISPOSAL: Store in the closed, original container in a cool, dry place out of reach of children. Do not store in direct sunlight. Dispose of empty container by wrapping in paper, placing in a plastic bag and putting in garbage.

SAFETY DIRECTIONS: Avoid contact with eyes and skin. When using the product wear rubber gloves. Wash hands after use.

FIRST AID: If poisoning occurs, contact a Doctor or Poisons Information Centre. Phone Australia 13 1126.

EASY TO USE SPRAY PACK

1. Remove original cap and attach the spray cap.
2. Turn the nozzle to "Spray" or "Stream" position. Straighten the tube. Pump the trigger to prime.
3. Apply to surface.
4. After use, place original cap back on container. To store trigger unit rinse thoroughly with water.

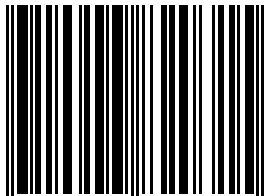


APVMA Approval No.
64669/3L/0110

Amgrow Pty Ltd
A.B.N. 81 100 684 786
82 Christensen Road,
Stapylton Qld 4207

Customer Service Number:
1800 063 619
www.amgrow.com.au

Batch No.
DOM:



9 310943 820315