



White Oil

Ready to Use

Garden Insect Spray & Leaf Gloss

ACTIVE CONSTITUENT: 586 g/kg PETROLEUM OIL

Controls Citrus Leafminer, Scale and other
Insects Pests in the Home Garden

Also for use as a Leaf Gloss on Indoor Plants

350g NET



White Oil

Ready to Use

SHAKE WELL BEFORE USE

Amgrow White Oil is specially formulated to control citrus leafminer, scale and certain other insect pests on citrus, roses, daphne, other ornamental plants and indoor plants. It is also ideal for use as a leaf gloss to enhance the appearance of indoor plants.

SITUATION	PEST CONTROLLED	HOW TO APPLY
Citrus, ornamental plants, indoor plants	Red, White Wax and certain other scales (not San Jose scale), Sooty Mould, Citrus Thrips, Mealy Bugs, Spider Mites, Aphids White fly (NSW, Vic, SA, WA, Tas only) White Louse Scale (Qld only)	Spray early in the morning or in the cool of the evening when the air is still. Hold can at least 50 cm from the plant and spray in short bursts just sufficient to cover affected areas. To avoid burning of foliage, do not use if temperature is over 30°C.
Citrus trees	Citrus leafminer	Apply as above at intervals of 5 to 14 days when young flush growth is present. Ensure that all immature leaves are treated. Do not spray more than 8 times per season.
As a leaf gloss on Indoor plants		Clean leaves first with a damp cloth and then apply sparingly and evenly to the upper surface of hard leaf plants. Spraying too close may cause a chilling of the plant.

NOT TO BE USED FOR ANY PURPOSE, OR IN ANY MANNER, CONTRARY TO THIS LABEL UNLESS AUTHORISED.

DO NOT PICK EDIBLE PLANTS FOR 1 DAY AFTER SPRAYING

CAUTION:

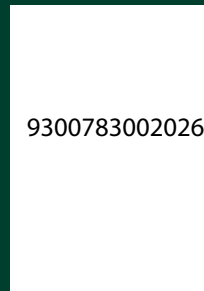
DO NOT allow chemical containers or spray to get into drains, sewers, streams or ponds. DO NOT spray directly on humans, pets, exposed food, food preparation areas or food utensils.

FLAMMABLE: Do not store or use near fire or flame. Contents under pressure.

STORAGE & DISPOSAL: Keep in a cool place out of the sun, and out of the reach of children.

Do not puncture or incinerate can, even when empty. Recycle empty cans if a facility is available or place used can in household rubbish.

BEWARE: Deliberately sniffing or inhaling concentrated spray can be harmful or fatal.



9300783002026

PROPELLANT: HYDROCARBON



Amgrow P/L ABN 81 100 684 786
82 Christensen Road, Stapylton Qld 4207
Customer Service Number 1800 063 619
www.amgrow.com.au

APVMA Approval No. 52723/51897

Batch No:

Date of Manufacture: